



Lychee One 荔枝一号

Lian Zhang

Lian Zhang was born in 1984 in Hangzhou, China, currently lives and works in London. She received her first MA in Painting from China Academy of Art, Hangzhou (2007-2010) and second MA from the Royal College of Art, London (2011-2013). She has won several painting prizes including Curator's Prize The Open West 2014 , Hine Painting Prize 2013, Shortlisted for Valerie Beston Award 2013. Recent exhibition include *Antisocial Isolation*, Saatchi gallery, London, 2020; *Constellations and Folds (solo)*, Lychee One, London, 2020; *Bone Memory*, Lychee One, London, 2019; *Rifts in silence (with Wu ding and Zhao Qian)*, M art center, Shanghai, 2018, *Flickering boundaries*, MadeIn Gallery, Shanghai, 2018, *Mingled Spaces (with Caroline Walker and Gareth Cadwallader)*, Lychee One, London, 2017; *The Open West*, The Wilson | Cheltenham Art Gallery & Museum, Cheltenham, 2014; *Deserts of Humanity*, Display London, 2014; *Painting Show & Performances*, Winter Projects, London, 2013; *Young Masters*, Sphinx Fine Art, London, 2013; *The masks we wear*, Kristin Hjellegjerde gallery, London, 2013

“ My working practice is based upon a practice of assembling constellations of images through which a serial network of fractured narratives, start to emerge. Partly this involves a splicing together of the imaginary and reality in ways that break up the logic of both realms and syntax of images. The process of fracturing opens out the process to differing velocities so the paintings might appear in a state of arrest or suspension, as being in slow motion or even subject to the blur of speed. It is as the underlying laws pertaining to physical reality are transformed but the way in which images might start to cohere into their departure from the habitual. If images are subject to the process of fragmentation, then temporality is likewise, and in this way, new and surprising conjunctions might yield from the folding operations of interiority and exteriority.

There are two types of drawing in my work, one pertaining to the inscription of figures and forms and one that draws lines pertaining to invisible abstractions. Painting is the means of discovering just how these two orders of inscription might cohere together. Recently a shift has start to occur in my work. There is the same kind of multiplicity and fragmentation, but it is directed away from the memory of either collage or cinematic montage toward the construction of imaginary mood-scapes in which traces of memory surface but without definite anchorage. They might be drifting apart from any sense of fixed determination or stylistic will. I might say that this is born out of hybridity as a critical concept but that is a far too lazy term because it implies a critical operation or device. Instead the word fascination comes to mind because it evokes the suspension of both time and will. ”

– Lian Zhang

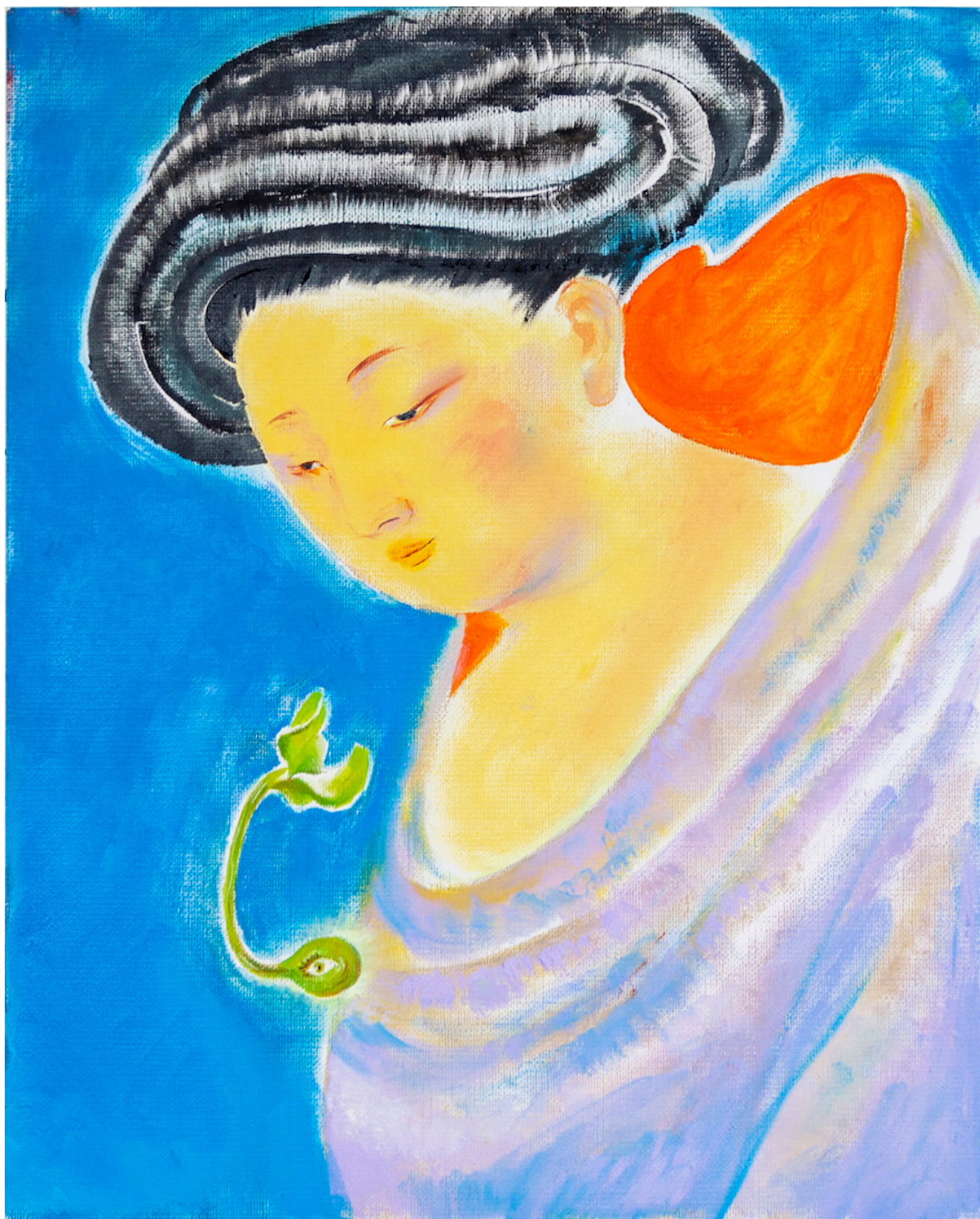




*Hair up*  
2020  
oil on canvas paper  
41 x 33 cm  
£500



Lychee One 荔枝一号



*Companion*  
2020  
oil on canvas paper  
41 x 33 cm  
£500



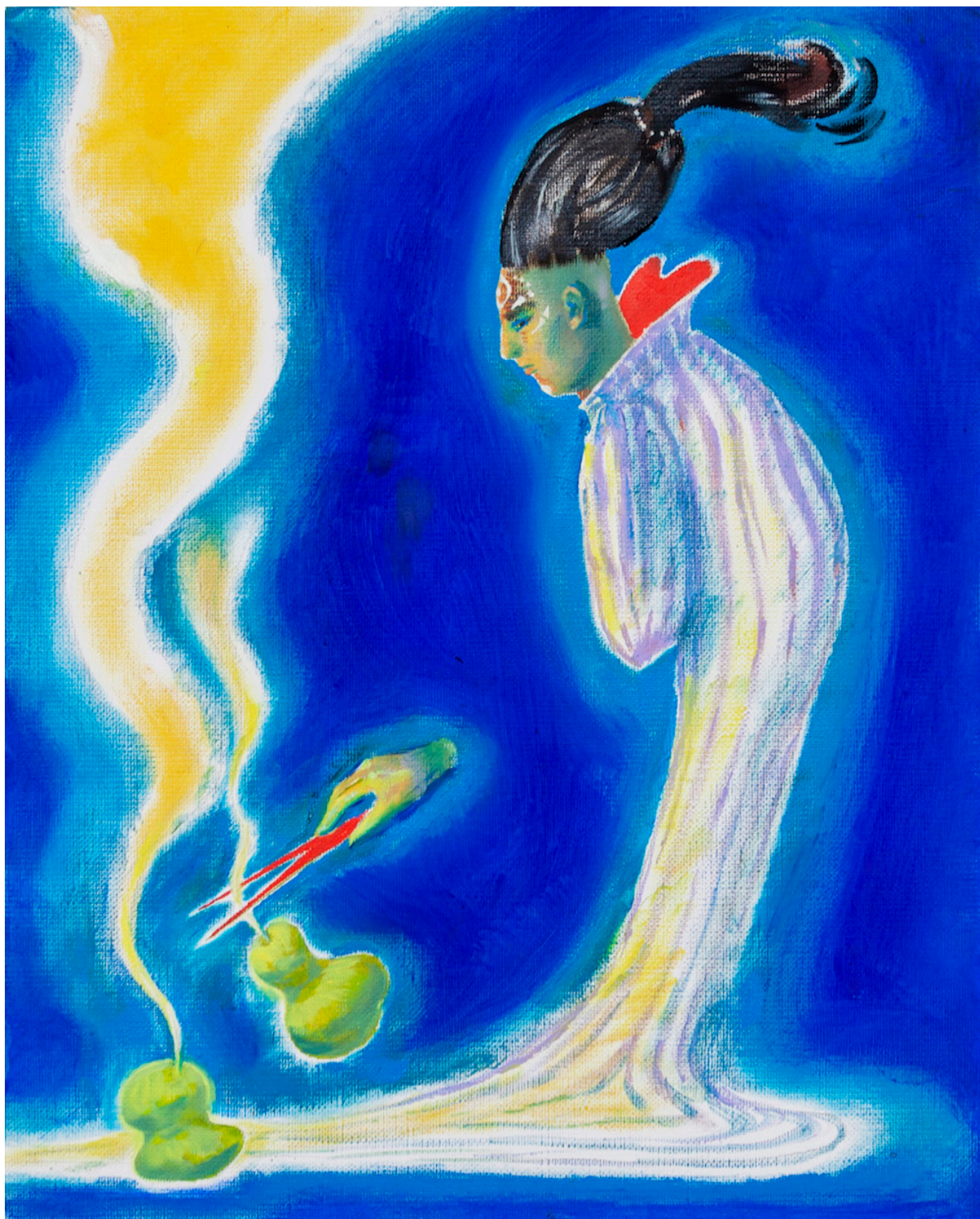
Lychee One 荔枝一号



*Ginseng fruit*  
2020  
oil on canvas paper  
41 x 33 cm  
£500



Lychee One 荔枝一号



*Crops*  
2020  
oil on canvas paper  
41 x 33 cm  
£500



Lychee One 荔枝一号



*Follower*  
2020  
oil on canvas paper  
41 x 33 cm  
£500



Lychee One 荔枝一号



*Invitation*  
2020  
oil on canvas paper  
41 x 33 cm  
£500



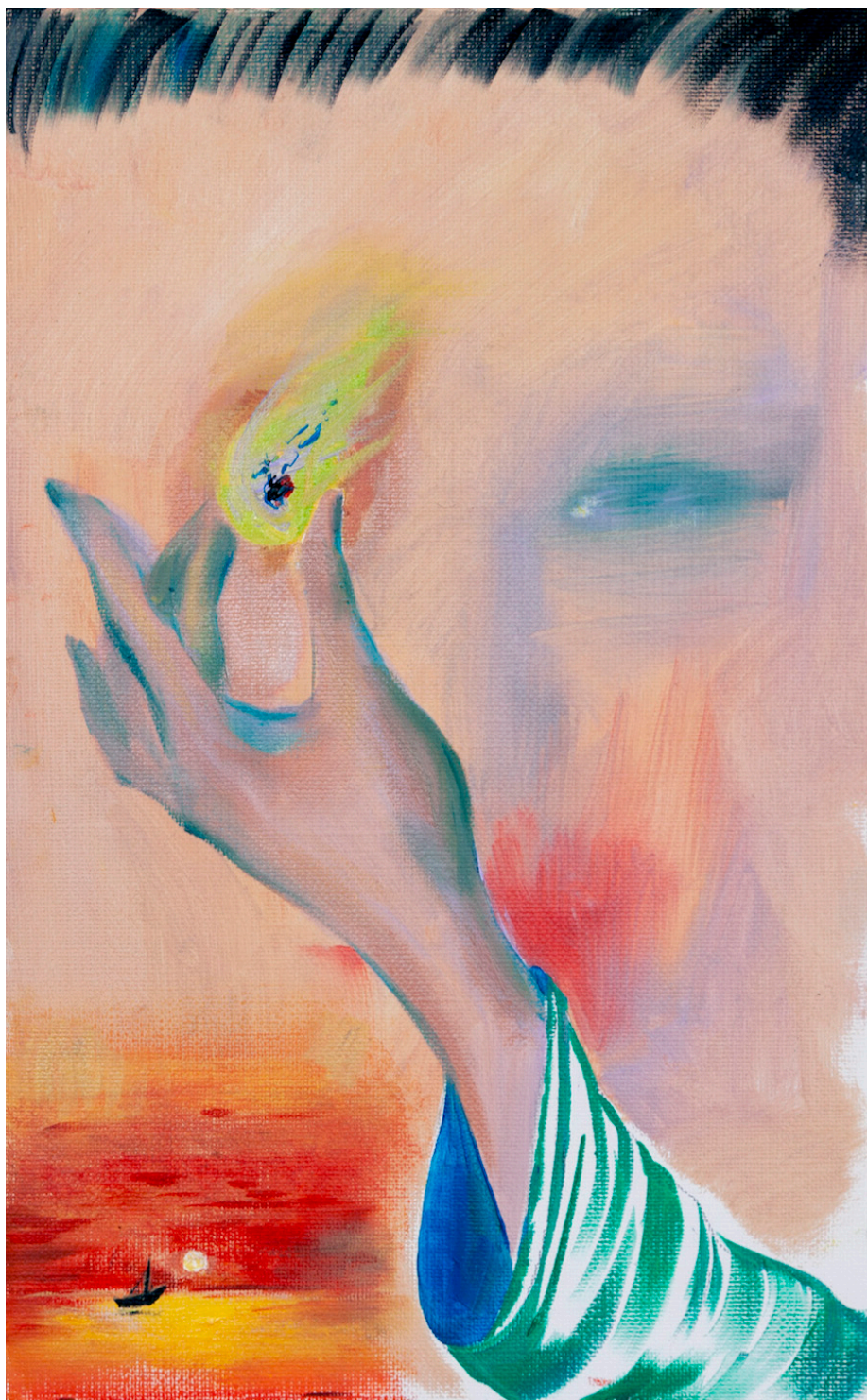
Lychee One 荔枝一号



*Eyebrow*  
2020  
oil on canvas paper  
41 x 33 cm  
£500



Lychee One 荔枝一号



*Sunset*  
2020  
oil on canvas paper  
33 x 20.5 cm  
£200



Lychee One 荔枝一号



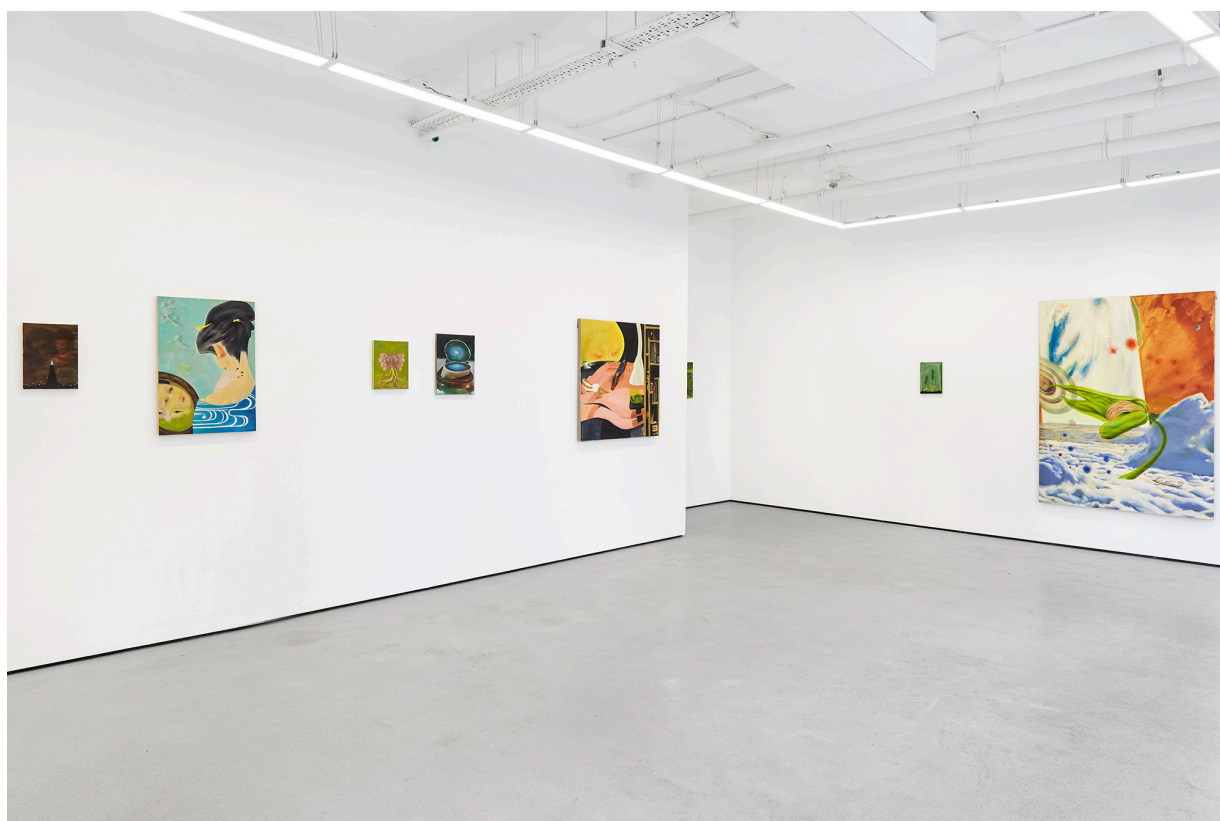
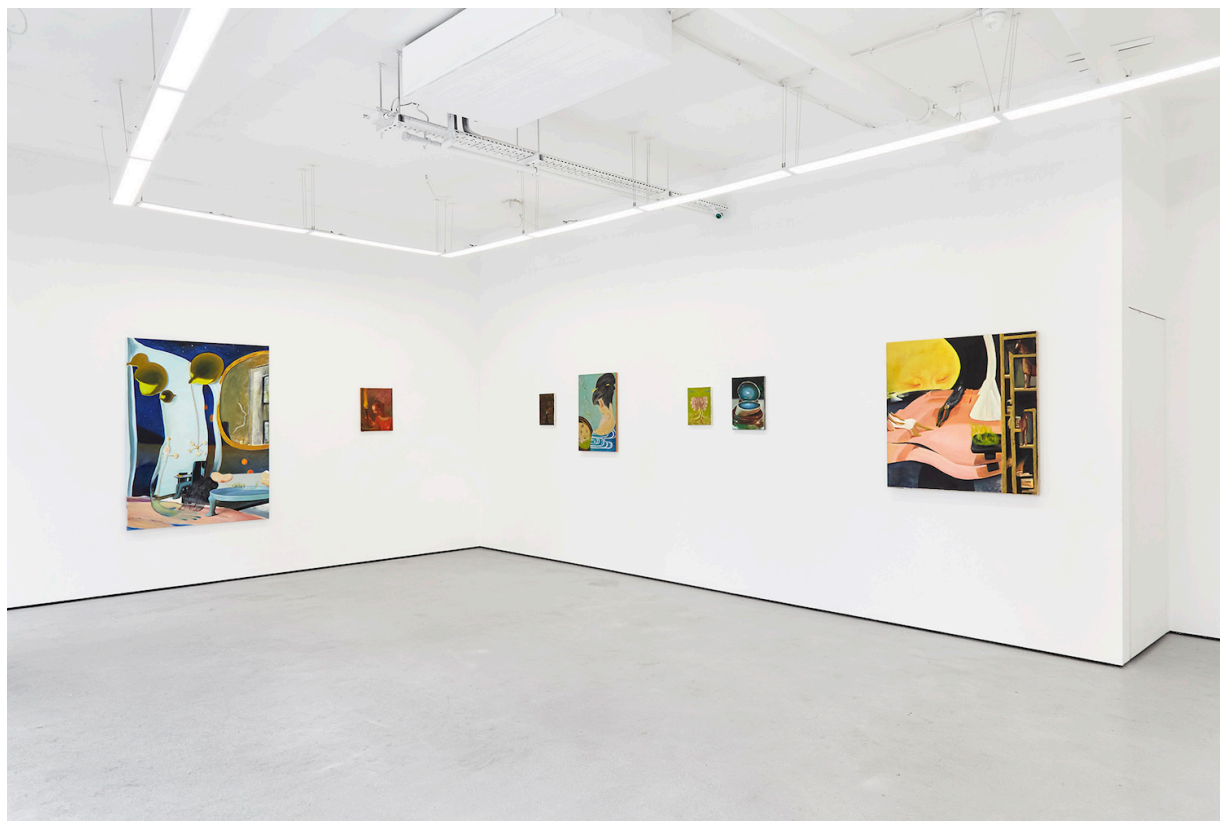
*Root*  
2020  
oil on canvas paper  
28 x 20.5 cm  
£200

Lychee One 荔枝一号

## Previous Exhibition Views

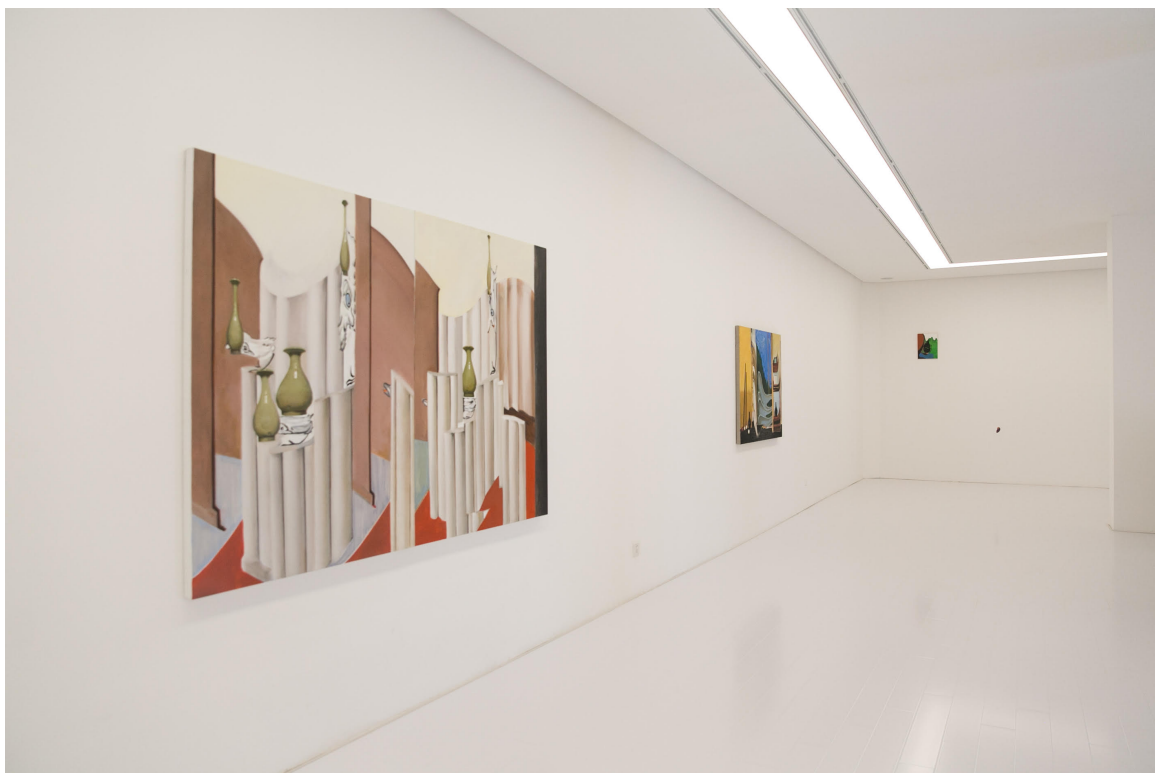


## Lychee One 荔枝一号



*Constellations and Folds*, Installation View, Lychee One, London, 2020

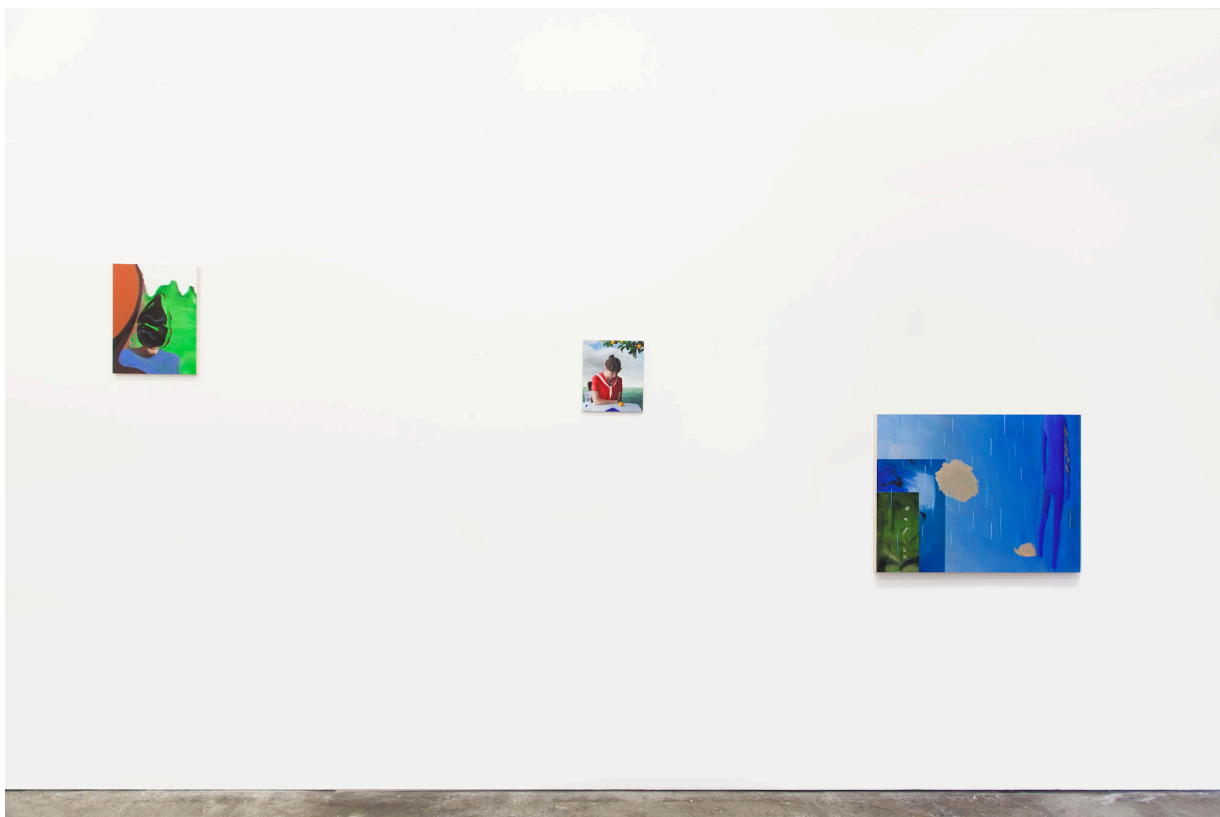
Lychee One 荔枝一号



*Rifts in silence*, Installation View, M art center, Shanghai, 2018



## Lychee One 荔枝一号



*Mingled Spaces*, Installation View, Lychee One, London, 2017

Lychee One 荔枝一号

## Artist CV



**Lian Zhang**

Born in 1984

Lives and works in London and Hangzhou

**Education**

2011-2013 MA Painting Royal College of Art, London

2007-2010 MA Painting China Academy of Art

**Selected Exhibitions**

2020	<i>Antisocial Isolation</i>	Saatchi Gallery with Delphian Gallery, London
2020	<i>Constellations and folds (solo)</i>	Lychee One, London
2018	<i>Bone Memory</i>	Lychee One, London
2018	<i>Rifts in silence</i>	M Art Center, Shanghai
2018	<i>Flickering Boundaries</i>	Madein Gallery, Shanghai
2017	<i>Mingled Spaces</i>	Lychee One, London
2015	<i>Elsewhere</i>	Lychee One, London
2014	<i>10 Year Anniversary show</i>	Cynthia Corbet Gallery, London
2014	<i>The Open West 2014</i>	The Wilson   Cheltenham Art Gallery & Museum, Cheltenham
2014	<i>Deserts of Humanity</i>	Display London, London
2013	<i>Painting Show &amp; Performances</i>	Winter Projects, London
2013	<i>Young Masters</i>	Sphinx Fine Art, London
2013	<i>The masks we wear</i>	Arteco gallery, London
2013	<i>RCA degree show</i>	Royal College of Art, London
2013	<i>Notes to Self-Thinking</i>	Royal College of Art, London
2012	<i>Summer show</i>	Royal College of Art, London
2012	<i>Interim show</i>	Royal College of Art, London
2012	<i>RCA secret</i>	Royal College of Art, London
2010	<i>Graduation show</i>	China Academy of Art, Hangzhou
2010	<i>Giant</i>	Today Gallery, Beijing
2009	<i>Utopia</i>	Regina Coffee, Hangzhou
2008	<i>Art Spring</i>	Orientation Gallery, Hangzhou
2008	<i>Spade</i>	798 T space, Beijing
2007	<i>New Generation of South River</i>	Eye Level Gallery, Shanghai
2007	<i>Star of the Century 2</i>	China Academy of Art, Hangzhou
2007	<i>Personate</i>	Hong Temple Art, Shanghai
2006	<i>Reflection</i>	Zhejiang Museum, Hangzhou

***Awards and Residency***

*Curator's Prize The Open West 2014*

*Hine Painting Prize 2013*

*Shortlisted for Valerie Beston Award 2013*

*International City of Arts Paris 2009*